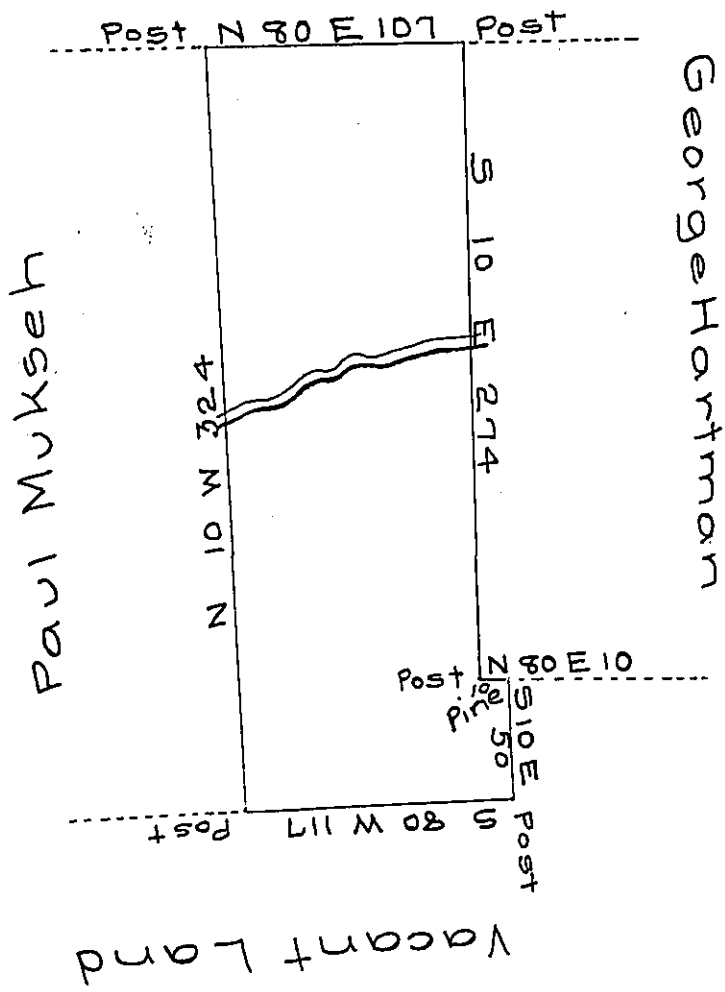


Hazle-  
Luzerne

Vacant Land



By virtue of a warrant dated the 5<sup>th</sup> March 1789 surveyed the 19<sup>th</sup> May 1789 to Ludwig Roth the above described tract of land situate on the head waters of Hazel Swamp Creek in Northampton County containing two hundred and seven acres fifty seven perches & the allowance of six pcent &c<sup>a</sup>

Geo. Palmer

Daniel Brodhead Esq.<sup>r</sup> }  
Survey<sup>r</sup> General

*IN TESTIMONY* that the above is a copy of the original remaining on file in the Department of Internal Affairs of Pennsylvania, made conformably to an Act of Assembly approved the 16th day of February, 1833, I have hereunto set my Hand and caused the Seal of said Department to be affixed at Harrisburg, this twentieth day of July 1906.

*James D. [Signature]*  
Secretary of Internal Affairs